

# Brake Quip

INNOVATIVE SOLUTIONS FOR AUTOMOTIVE PLUMBING

## The One Stop Shop for Automotive Plumbing



Lab Tested - Tuff!



AUTOMOTIVE PLUMBING CATALOG  
[www.brakequip.com](http://www.brakequip.com)

©Copyright 2010

\$1.50 USA

# Tube Nuts

Most BrakeQuip tube nuts have two distinct features for easier installation & dismantling.

1. **A small step on end of the thread** – This allows for easier installation because the step acts as a guide & makes it easier to start the thread. It also gives the thread clearance at the end which eliminates the problem of flaring out when over tightened. If this happens, the nut can be very difficult to remove & can some times destroy the thread when removed.
2. **A thread relief under the hex** – apart from looking more professional, this allows the nut to be screwed down right up to the hex if necessary.

**FEATURES:**

- Male & Female
- Imperial & Metric Threads
- Various tube sizes
- Zinc plated for corrosion resistance

Assortment kit available.  
To order see Part No.

**BQ7005 & BQ7006.**

See page 8 for Assortment Kit



## Male Tube Nuts

PART NO.	THREAD	A	B	C
<b>BQ72</b>	M10 x 1	14mm	10mm	3/16" DIN
<b>BQ2577</b>	7/16" x 24NS	13mm	7/16"	1/4"
<b>BQ2578</b>	1/2" x 20NF	12mm	1/2"	5/16"
<b>BQ4276</b>	3/8" x 20BSF	16mm	3/8"	3/16"
<b>BQ4277</b>	7/16" x 20NF	18mm	7/16"	1/4"
<b>BQ4285</b>	3/8" x 24NF	16mm	3/8"	3/16"
<b>BQ4510</b>	M9 x 1	14mm	10mm	3/16"
<b>BQ4511</b>	M10 x 1	14mm	10mm	3/16"
<b>BQ4511-11</b>	M10 x 1	12mm	11mm	3/16"
<b>BQ4511LT</b>	M10 x 1	14mm	10mm	3/16"
<b>BQ4512</b>	M10 x 1.25	15mm	10mm	3/16"
<b>BQ4513</b>	M12 x 1	15mm	12mm	1/4"
<b>BQ5555</b>	3/8" x 24NF	10mm	3/8"	3/16"
<b>BQ5842</b>	7/16" x 24NS	10mm	7/16"	3/16"
<b>BQ6118</b>	7/16" x 20NF	18mm	7/16"	3/16"
<b>BQ9169</b>	M12 x 1	15mm	14mm	1/4" DIN
<b>BQ9180</b>	M12 x 1	15mm	12mm	3/16"
<b>BQ9181</b>	5/8" x 18NF	14mm	5/8"	3/8"
<b>BQ9182</b>	M12 x 1.5	13mm	12mm	1/4"
<b>BQ9183</b>	M14 x 1.5	15mm	14mm	1/4"
<b>BQ9184</b>	1/2" x 20NF	13mm	1/2"	3/16"
<b>BQ9185</b>	9/16" x 18NF	14mm	9/16"	3/16"
<b>BQ9186</b>	9/16" x 18NF	14mm	9/16"	1/4"
<b>BQ9187</b>	1/2" x 20NF	14mm	1/2"	1/4"
<b>BQ9188</b>	M10 x 1.5	15mm	10mm	3/16"
<b>BQ9189</b>	M11 x 1.0	15mm	11mm	3/16"
<b>BQ9190</b>	M11 x 1.25	15mm	11mm	3/16"
<b>BQ9191</b>	M11 x 1.5	15mm	11mm	3/16"
<b>BQ9192</b>	M12 x 1.25	15mm	12mm	3/16"
<b>BQ9193</b>	M12 x 1.5	15mm	12mm	3/16"
<b>BQ9194</b>	M13 x 1.0	15mm	13mm	3/16"
<b>BQ9195</b>	M13 x 1.25	15mm	13mm	3/16"
<b>BQ9196</b>	M13 x 1.5	15mm	13mm	3/16"
<b>BQ9197</b>	M14 x 1.5	15mm	14mm	5/16"
<b>BQ9198</b>	M16 x 1.5	16mm	16mm	5/16"
<b>BQ9199</b>	M18 x 1.5	16mm	18mm	5/16"

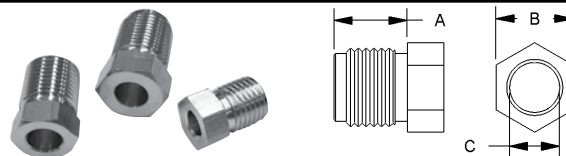
## Female Tube Nuts

PART NO.	THREAD	A	B	C
<b>BQ55</b>	3/8" x 24NF	8mm	1/2"	3/16"
<b>BQ57</b>	7/16" x 20NF	3/8"	9/16"	1/4"
<b>BQ9174</b>	M12 x 1	10mm	16mm	3/16"
<b>BQ9175</b>	M10 x 1	10mm	1/2"	3/16"
<b>BQ9176</b>	3/8" x 24NF	10mm	1/2"	3/16"
<b>BQ9177</b>	1/2" x 20NF	7/16"	5/8"	5/16"
<b>BQ9178</b>	M12 x 1.5	10mm	16mm	1/4"
<b>BQ9179</b>	M12 x 1	10mm	16mm	1/4"

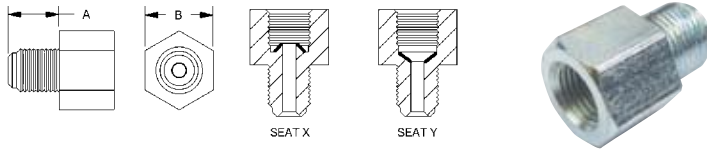
# Stainless Steel Tube Nuts

Give your vehicle the professional look of non rusting stainless steel.

- Bright finish
- Professional design
- Long lasting



PART NO.	TYPE	THREAD	A	B	C
<b>BQ2577SS</b>	Male	7/16" x 24NS	13mm	7/16"	1/4"
<b>BQ4511SS</b>	Male	M10 x 1	14mm	10mm	3/16"
<b>BQ4513SS</b>	Male	M12 x 1	15mm	12mm	1/4"
<b>BQ5555SS</b>	Male	3/8" x 24NF	10mm	3/8"	3/16"
<b>BQ5842SS</b>	Male	7/16" x 24NS	10mm	7/16"	3/16"



## Male - Female Thread Adapters

Save time & hassle when adapting different threads quickly & easily. Universal Male thread can be sealed with all sealing combinations.

**FEATURES:**

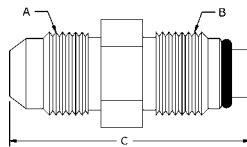
- Imperial & Metric Threads
- Inverted seat & drill point seats available
- Zinc plated for corrosion resistance

Assortment kit available.  
To order see Part No.

**BQ7004.**

See page 8 for Assortment Kit

PART NO.	MALE THREAD	FEMALE THREAD	SEAT TYPE	A	B
<b>BQ40</b>	M10 x 1	M10 x 1	Y	13mm	13mm
<b>BQ41</b>	M10 x 1	M10 x 1.25	X	12mm	13mm
<b>BQ42</b>	M10 x 1.25	M10 x 1	X	12mm	13mm
<b>BQ43</b>	M12 x 1	M10 x 1	X	12mm	16mm
<b>BQ44</b>	M10 x 1	M12 x 1	X	12mm	16mm
<b>BQ45</b>	3/8" x 24NF	7/16" x 24NS	X	12mm	9/16"
<b>BQ46</b>	7/16" x 24NS	3/8" x 24NF	X	12mm	9/16"
<b>BQ47</b>	7/16" x 20NF	3/8" x 24NF	X	12mm	9/16"
<b>BQ48</b>	1/8" x 27NPT	3/8" x 24NF	X	12mm	1/2"
<b>BQ49</b>	M10 x 1	3/8" x 24NF	X	12mm	13mm
<b>BQ50</b>	3/8" x 24NF	M10 x 1	X	12mm	1/2"
<b>BQ120</b>	1/2" x 20NF	3/8" x 24NF	X	12mm	16mm
<b>BQ121</b>	9/16" x 20NS	3/8" x 24NF	X	12mm	11/16"
<b>BQ122</b>	1/2" x 20NF	7/16" x 24NS	X	12mm	16mm
<b>BQ123</b>	9/16" x 18NF	7/16" x 24NS	X	12mm	11/16"
<b>BQ124</b>	9/16" x 18NF	3/8" x 24NF	X	12mm	11/16"
<b>BQ125</b>	M10 x 1	3/8" x 24NF	Y	12mm	13mm
<b>BQ126</b>	7/16" x 20NF	M10 x 1	Y	12mm	9/16"
<b>BQ127</b>	7/16" x 24NS	1/2" x 20NF	X	12mm	5/8"
<b>BQ156</b>	3/8" x 24NF	3/8" x 24NF	X	12mm	9/16"
<b>BQ187</b> <small>NEW</small>	M10 x 1.5	1/8" x 27NPT	Y	11mm	9/16"
<b>BQ246</b>	1/8" x 27NPT	M12 x 1	Y	12mm	16mm
<b>BQ247</b>	3/8" x 24NF	1/8" x 27NPT	Y	11mm	9/16"
<b>BQ248</b>	1/2" x 20NF	1/8" x 27NPT	Y	11mm	9/16"
<b>BQ260</b>	3/8" x 24NF	1/2" x 20NF	X	12mm	16mm
<b>BQ261</b>	3/8" x 24NF	9/16" x 18NF	X	12mm	11/16"
<b>BQ262</b>	9/16" x 18NF	3/8" x 24NF	Y	12mm	11/16"



## Bump Tube Adapters

Handy, hard to get tube adapters for power steering & fuel systems.

**FEATURES:**

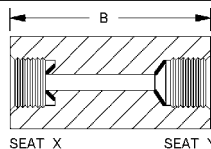
- Comes with a high temperature Viton O-Ring
- Imperial & Metric Threads

Assortment kit available.  
To order see Part No.

**BQ7003.**

See page 8 for Assortment Kit

PART NO.	A	B	C
<b>14MMBT-6MJ</b>	9/16" x 18NF (No.6 JIC)	M14 x 1.5	39mm
<b>16MMBT-6FI</b>	5/8" x 18NF (Inverted Seat)	M16 x 1.5	32mm
<b>16MMBT-6MJ</b>	9/16" x 18NF (No.6 JIC)	M16 x 1.5	39mm
<b>18MMBT-6MJ</b>	9/16" x 18NF (No.6 JIC) <small>NEW</small>	M18 x 1.5	39mm
<b>5MBT-5MJ</b>	1/2" x 20NF (No. 5 JIC)	1/2" x 20NF	37mm
<b>7MBT-6MJ</b>	9/16" x 18NF (No.6 JIC)	11/16" x 18NF	41mm



## Female Tube Joiners

The recommended way to legally join two tubes together. BrakeQuip tube joiners allow you to join tubes professionally & safely.

**FEATURES:**

- Imperial & Metric Threads
- Inverted seat & drill point seats available
- Zinc plated for corrosion resistance

Assortment kit available.  
To order see Part No.

**BQ7009.**

See page 9 for Assortment Kit

PART NO.	THREAD	SEAT TYPE	A	B
<b>BQ110</b>	3/8" x 24NF	X	1/2"	22.2mm
<b>BQ111</b>	7/16" x 24NS	X	9/16"	25.0mm
<b>BQ112</b>	1/2" x 20NF	X	5/8"	25.0mm
<b>BQ113</b>	5/8" x 18NF	X	3/4"	29.0mm
<b>BQ114</b>	M10 x 1	Y	13.0mm	29.0mm
<b>BQ115</b>	3/8" x 24NF	Y	1/2"	29.0mm
<b>BQ116</b>	M12 x 1	X	5/8"	25.0mm
<b>BQ117</b>	M10 x 1	X	13.0mm	22.0mm
<b>BQ119</b>	9/16" x 18NF	X	3/4"	27.0mm
<b>BQ147</b> <small>NEW</small>	M12 x 1	Y	16.0mm	28.0mm

## Male Test Adapters

These handy test Adapters can be used for a variety of applications including tapping into your hydraulic system for pressure readings. Will fit most bleed screw openings.

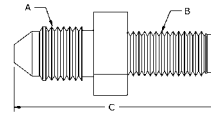
**FEATURES:**

- Imperial & Metric Threads
- Take off point are universal JIC ends
- Zinc plated for corrosion resistance

Assortment kit available.  
To order see Part No.

**BQ7010.**

See page 9 for Assortment Kit



PART NO.	A	B	C
<b>BQ128</b>	3/8" x 24NF (No. 3 JIC)	M10 x 1.25	36mm
<b>BQ129</b>	3/8" x 24NF (No. 3 JIC)	M10 x 1.00	36mm
<b>BQ130</b>	3/8" x 24NF (No. 3 JIC)	M10 x 1.5	60mm
<b>BQ131</b>	7/16" x 20NF (No. 4 JIC)	3/8" x 24NF	37mm
<b>BQ132</b>	3/8" x 24NF (No. 3 JIC)	1/4" x 28NF	36mm
<b>BQ133</b>	3/8" x 24NF (No. 3 JIC)	5/16" x 24NF	36mm
<b>BQ134</b>	7/16" x 20NF (No. 4 JIC)	7/16" x 24NS	37mm
<b>BQ135</b>	3/8" x 24NF (No. 3 JIC)	3/8" x 24NF	36mm
<b>BQ144</b>	7/16" x 20NF (No. 4 JIC)	M12 x 1.00	37mm
<b>BQ145</b>	7/16" x 20NF (No. 4 JIC)	M10 x 1.00	30mm
<b>BQ157</b>	3/8" x 24NF (No. 3 JIC)	1/8" x 28BSPP	30mm

## Bleed Screws

These popular bleed screws makes replacement easy.

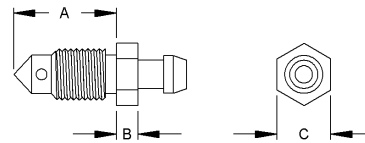
**FEATURES:**

- Heavy duty hex allows for good gripping
- Zinc plated for corrosion resistance
- Imperial & Metric Threads

Assortment kit available.  
To order see Part No.

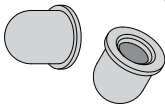
**BQ7014.**

See page 9 for Assortment Kit



PART NO.	THREAD	A	B	C
<b>BQ4433</b>	3/8" x 24NF	20mm	5mm	10mm
<b>BQ4434</b>	M10 x 1	23mm	6mm	10mm
<b>BQ4435</b>	M10 x 1	19mm	6mm	10mm
<b>BQ4438</b>	5/16" x 24NF	17.5mm	5mm	5/16"
<b>BQ4439</b>	1/4" x 28NF	15mm	5mm	1/4"
<b>BQ4440</b>	M10 x 1.5	18mm	5mm	10mm
<b>BQ4441</b>	M7 x 1	22mm	5mm	1/4"
<b>BQ4442</b>	M8 x 1.25	22mm	5mm	8mm
<b>BQ4443</b>	M8 x 1	18mm	5mm	8mm
<b>BQ4444</b>	7/16" x 24NS	24mm	5mm	7/16"
<b>BQ4445</b>	7/16" x 20NF	21mm	5mm	7/16"
<b>BQ4446</b>	M10 x 1.25	21mm	5mm	10mm

## Bleeder Caps



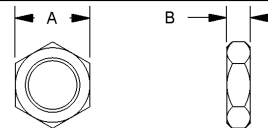
**BQ315 (Small)**  
**BQ316 (Large)**

## Bulkhead Nuts

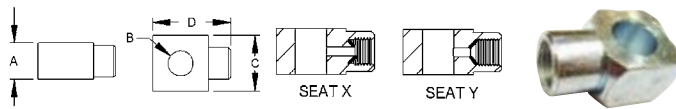
The biggest range of brake hose bulkhead nuts in the country.

**FEATURES:**

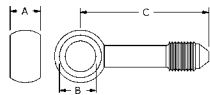
- Zinc plated for corrosion resistance
- Imperial & Metric Threads
- Heavy duty construction



PART NO.	THREAD	A	B
<b>BQ13</b>	5/8" x 18NF	15/16"	8mm
<b>BQ75</b>	7/8" x 14NF	1-1/8"	8mm
<b>BQ77</b>	11/16" x 16NF	1"	8mm
<b>BQ78</b>	3/8" x 24NF	1/2"	5mm
<b>BQ79</b>	M10 x 1	13mm	5mm
<b>BQ80</b>	7/16" x 20NF	5/8"	6mm
<b>BQ81</b>	M12 x 1	19mm	6mm
<b>BQ82</b>	M12 x 1.5	19mm	6mm
<b>BQ83</b>	1/2" x 20NF	3/4"	6mm
<b>BQ84</b>	3/4" x 16NF	1-1/16"	8mm
<b>BQ85</b>	M20 x 1.5	27mm	8mm
<b>BQ86</b>	M18 x 1.5	25mm	8mm
<b>BQ87</b>	M16 x 1.5	22mm	7mm
<b>BQ88</b>	M14 x 1.5	19mm	6mm
<b>BQ89</b>	7/8" x 18NS	1-1/8"	8mm



PART NO.	THREAD	SEAT TYPE	A	B	C	D
<b>BQ60</b>	3/8" x 24NF	X	1/2"	10mm	17mm	27mm
<b>BQ61</b>	M10 x 1	X	13mm	10mm	17mm	27mm
<b>BQ62</b>	7/16" x 24NS	X	14mm	7/16"	18mm	28mm
<b>BQ63</b>	1/2" x 20NF	X	16mm	1/2"	20mm	30mm



PART NO.	A	B	C	THREAD
<b>BQ150</b>	10mm	10mm	42mm	3/8" x 24NF (No. 3 JIC)
<b>BQ151</b>	10mm	10mm	21mm	3/8" x 24NF (No. 3 JIC)
<b>BQ152</b>	10mm	10mm	21mm x (2)	3/8" x 24NF (No. 3 JIC)
<b>BQ155</b>	10mm	10mm	42mm	7/16" x 20NF (No. 4 JIC)

## Banjo Unions & Adapters

These fittings allow you to convert most joints to a sharp 90° legally & professionally. The swivel feature of these fittings gives you more flexibility in installation.

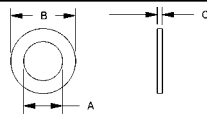
**FEATURES:**

- Imperial & Metric Threads
- Zinc plated for corrosion resistance

Assortment kit available.  
To order see Part No.

**BQ7001.**

See page 8 for Assortment Kit



PART NO.	NOMINAL ID	A	B	C
<b>BQ813</b>	8mm	8.1	13.00	1.3
<b>BQ3858</b>	3/8"	9.6	15.60	1.5
<b>BQ1016</b>	10mm	10.1	16.00	1.5
<b>BQ1118</b>	7/16"	11.2	18.00	1.5
<b>BQ1218</b>	12mm	12.1	18.00	1.5
<b>BQ1320</b>	1/2"	12.8	20.00	2.0
<b>BQ1421</b>	9/16"	14.3	22.00	2.0
<b>BQ1522</b>	15mm	15.1	22.00	2.0
<b>BQ1624</b>	16mm	16.1	24.00	2.0

## Copper Washers

Heavy duty copper washers for maximum sealing power. The legal & professional way to seal high pressure hydraulic braking systems.

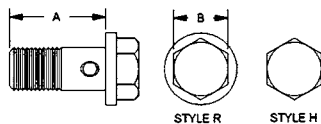
**FEATURES:**

- Sizes to fit all banjo bolts
- Reduced outer diameter for less interference

Assortment kit available.  
To order see Part No.

**BQ7000.**

See page 8 for Assortment Kit



PART NO.	THREAD	HEAD STYLE	A	B
<b>BQ8076</b>	M8 x 1	R	17mm [11/16"]	10mm
<b>BQ8077</b>	M8 x 1.25	R	16mm [5/8"]	10mm
<b>BQ8078</b>	M12 x 1.25	R	25mm [1"]	14mm
<b>BQ8083*</b>	M10 x 1	H	34.5mm [1-3/8"]	14mm
<b>BQ8084*</b>	M10 x 1.25	H	34.5mm [1-3/8"]	14mm
<b>BQ8085*</b>	3/8" x 24NF	H	34.5mm [1-3/8"]	9/16"
<b>BQ8086</b>	M10 x 1.5	R	24mm [15/16"]	11mm
<b>BQ8087</b>	M11 x 1.25	R	24mm [15/16"]	5/8"
<b>BQ8088</b>	M10 x 1.5	R	27mm [1-1/16"]	10mm
<b>BQ8089</b>	7/16" x 20NF	R	24mm [15/16"]	7/16"
<b>BQ8090</b>	7/16 x 24NS	R	27mm [1-1/16"]	1/2"
<b>BQ8092</b>	M12 x 1.5	R	25mm [1"]	14mm
<b>BQ8093</b>	3/8" x 24NF	R	25mm [1"]	14mm
<b>BQ8094</b>	M10 x 1	R	26mm [1"]	14mm
<b>BQ8095</b>	M10 x 1	R	22mm [7/8"]	12mm
<b>BQ8096</b>	7/16" x 20NF	R	27mm [1-1/16"]	11mm
<b>BQ8097</b>	1/2" x 20NF	R	30mm [1-3/16"]	9/16"
<b>BQ8098</b>	M12 x 1	R	21mm [13/16"]	13mm
<b>BQ8099</b>	M10 x 1.25	R	22mm [7/8"]	12mm

## Banjo Bolts

A banjo bolt for every application.

**FEATURES:**

- Reduced head size for appearance & less interference
- Zinc plated for corrosion resistance
- Imperial & Metric Threads

Assortment kit available.  
To order see Part No.

**BQ7007.**

See page 9 for Assortment Kit

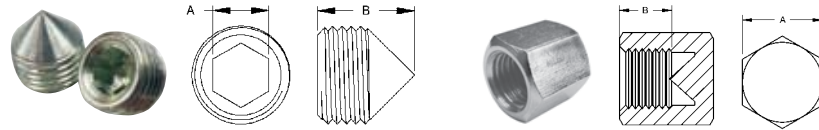
\* Double Banjo Bolt

## Fitting Plugs

The ideal fitting for blanking off high pressure fluid ports. Fitting design has a universal seat so no sealing compounds necessary.

**FEATURES:**

- Zinc plated for corrosion resistance
- Imperial & Metric Threads



PART NO.	THREAD	A	B
<b>BQ18</b>	M10 x 1	5mm	10mm
<b>BQ19</b>	3/8" x 24NF	3/16"	10mm
<b>BQ26</b>	7/16" x 24NS	1/4"	11mm
<b>BQ160</b>	3/8" x 24NF	1/2"	8mm
<b>BQ161</b>	7/16" x 24NS	9/16"	8mm
<b>BQ162</b>	7/16" x 20NF	9/16"	8mm
<b>BQ163</b>	1/2" x 20NF	16mm	8mm
<b>BQ164</b>	M10 x 1	13mm	8mm
<b>BQ165</b>	M10 x 1.25	13mm	8mm
<b>BQ166</b>	M12 x 1	16mm	8mm
<b>BQ167</b>	M12 x 1.5	16mm	8mm

## 3 Way Tube Tee's with Mounting Hole

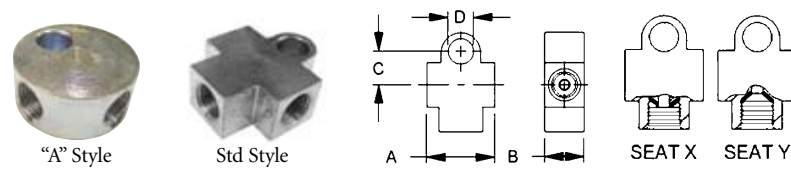
The ideal fitting for legally joining 3 tubes together. Also features a mounting hole for secure installation.

**FEATURES:**

- Imperial & Metric Threads
  - Inverted seat & drill point seats available
  - Zinc plated for corrosion resistance
- Assortment kit available.  
To order see Part No.

**BQ7002.**

See page 8 for Assortment Kit



PART NO.	THREAD	SEAT TYPE	A	B	C	D
<b>BQ56A</b>	3/8" x 24NF	X	28mm	1/2"	7.70mm	5/16"
<b>BQ90A</b>	3/8" x 24NF	Y	1-1/4"	1/2"	9.00mm	5/16"
<b>BQ91A</b>	M10 x 1	X	1-1/4"	1/2"	9.00mm	8mm
<b>BQ92A</b>	7/16" x 24NS	X	1-1/4"	14mm	9.00mm	5/16"
<b>BQ93</b>	1/8" x 27NPT	Y	26mm	1/2"	10.75mm	5/16"
<b>BQ94</b>	7/16" x 20NF	Y	30mm	14mm	10.75mm	3/8"
<b>BQ95A</b>	M10 x 1	Y	1-1/4"	14mm	10.00mm	7mm

## Weld On Banjo Heads

Designed to make plumbing easy when banjo fittings are necessary. Simply braze 3/16" (4.75mm) tube to banjo head. Can also be countersunk for 1/4" tube.

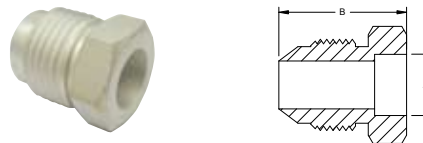
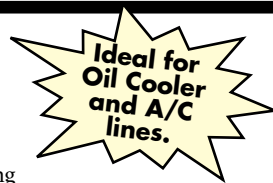


PART NO.	A	B	C	D
<b>BQ223</b>	8mm	10mm	17mm	25mm
<b>BQ224</b>	10mm	10mm	18mm	25mm
<b>BQ225</b>	10mm	7/16"	19mm	25mm

## Aluminum Weld On Fittings

The ultimate convenience item for aluminum tubes found on air conditioning and oil cooler lines. This problem solver will make it easy to connect aluminum tube to flexible hose.

The pre-fluxed aluminum brazing rods **BQ34** are ideal for brazing these fittings.



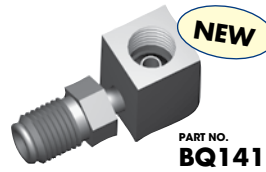
PART NO.	THREAD	SEAT ANGLE	B	A
<b>BQ170</b>	9/16" x 18NF	37°	20mm	3/8"
<b>BQ171</b>	5/8" x 18NF	45°	22mm	3/8"
<b>BQ172</b>	3/4" x 16NF	37°	23mm	1/2"
<b>BQ173</b>	7/8" x 14NF	37°	26mm	5/8"
<b>BQ174</b>	1-1/16" x 14	45°	34mm	3/4"

### Tandem Trailer Fitting Universal (4 Way)



- 3/8" x 24NF x 4 (Inverted Seat)
- Secured by bulkhead mount (Use BQ13 bulkhead nut)
- Eliminates fittings and joins
- Any excess ports can be blanked off with a BQ19 plug

### Swivel Elbow



3/8" x 24NF - 3/8" x 24NF  
This handy swivel fitting is ideal for a tight 90° situation where the connection needs to be seated on an inverted seat.

### Universal Mounting Bracket



Universal hole size allows most brake hoses to be securely mounted. Bracket can be screwed on, riveted or welded to frame. Rounded finish for professional looks.

### Brake Hose Retaining Clip



Universal clip design secures most brake hoses to mounting surface.



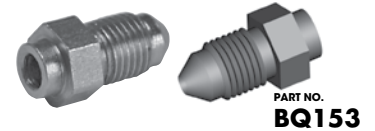
Suits Toyota vehicles.

### 3 Way Tee (with Bracket)



- FEATURES:**
- 3/8" x 24NF x 3 (Inverted Seat)
  - All steel construction

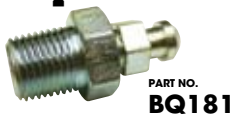
### Weld On Fitting



The ultimate problem solver for connecting metal tube to hose.

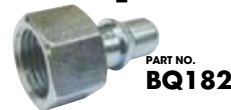
- FEATURES:**
- Universal countersink hole for 3/16" & 1/4" tube sizes
  - Popular No. 3 JIC take off point

### Bleed Screw Repair Kit



This repair kit will rescue your brake component that has a stripped or broken bleed screw. Simply drill and tap to 1/8" x 27NPT thread. Works for all metals.

### Transmission Line Adapters



5/8" x 18NF inverted - Straight



5/8" x 18NF inverted - 90°

Convert your push on connection transmission lines to a double flare connection. This enables you to make and repair these lines in your shop.

### Copper Seat Sealer



The ideal solution for sealing damaged seats. Suitable for all 3/8" and 10mm female fitting seats.

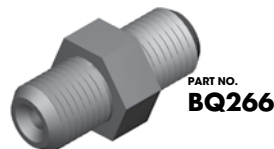
### Braze-On Fitting

Part No. BQ226 Countersunk for 3/8" tube  
Part No. BQ227 Countersunk for 10mm tube



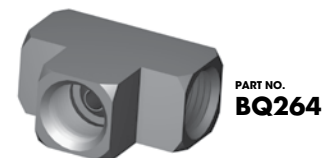
No. 6 JIC (9/16" x 18NF) male braze-on fitting for power steering tubes.

### Female Hose Joiner

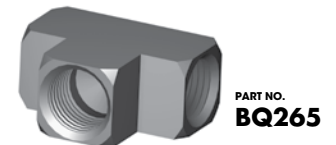


3/8" x 24NF No.3 JIC (AN)  
Joins 3/8" x 24NF female fittings – universal design for both seat types.

### 3-Way Tees



3/8" x 24NF x (3) inverted seat  
Compact steel fitting for joining 3 lines.



3/8" x 24NF x (2) inverted seat  
1/8" x 27NPT x (1)  
Compact steel fitting for installing brake pressure switch into system.



PART NO.  
**BQ7000**



PART NO.  
**BQ7002**



PART NO.  
**BQ7004**



PART NO.  
**BQ7001**



PART NO.  
**BQ7003**



PART NO.  
**BQ7005**

**Copper Washers**

Part No. **BQ7000**

CONTENTS	DESCRIPTION	QTY.
<b>BQ1016</b>	10mm ID x 16mm OD x 1.5mm thick	20
<b>BQ1118</b>	7/16" ID x 18mm OD x 1.5mm thick	20
<b>BQ1218</b>	12mm ID x 18mm OD x 1.5mm thick	20
<b>BQ1320</b>	1/2" ID x 20mm OD x 2mm thick	20
<b>BQ1421</b>	9/16" ID x 21mm OD x 2mm thick	10
<b>BQ1522</b>	15mm ID x 22mm OD x 2mm thick	10
<b>BQ1624</b>	16mm ID x 24mm OD x 2mm thick	10
<b>BQ3858</b>	3/8" ID x 5/8" OD x 1.5mm thick	20

**Banjo Unions & Adapters**

Part No. **BQ7001**

CONTENTS	DESCRIPTION	QTY.
<b>BQ60</b>	Union 10mm Hole x 1/2" (T) - 3/8" x 24NF (IS)	4
<b>BQ61</b>	Union 10mm Hole x 13mm (T) - M10x1 (IS)	4
<b>BQ62</b>	Union 7/16" Hole x 14mm (T) - 7/16" x 24NS (IS)	4
<b>BQ63</b>	Union 1/2" Hole x 16mm (T) - 1/2" x 20NF (IS)	4
<b>BQ150</b>	Adapter 10 x 10mm (Ext.) - 3/8" x 24NF (No. 3 JIC)	4
<b>BQ151</b>	Adapter 10 x 10mm - 3/8" x 24NF (No. 3 JIC)	4

T = Thickness IS = Inverted Seat

**3-Way Tube Tee with Mounting Hole**

Part No. **BQ7002**

CONTENTS	DESCRIPTION	QTY.
<b>BQ56A</b>	3/8" x 24NF (IS) 5/16" Mount Hole	2
<b>BQ90A</b>	3/8" x 24NF (DPS) 5/16" Mount Hole	2
<b>BQ91A</b>	M10 x 1 (IS) 8mm Mount Hole	2
<b>BQ92A</b>	7/16" x 24NS (IS) 5/16" Mount Hole	2
<b>BQ93</b>	1/8" x 27NPT 5/16" Mount Hole	2
<b>BQ94</b>	7/16" x 20NF (DPS) 3/8" Mount Hole	2
<b>BQ95A</b>	M10 x 1 (DPS) 7mm Mount Hole	2

IS = Inverted Seat DPS = Drill Point Seat

**Bump Tube Adapters**

Part No. **BQ7003**

CONTENTS	DESCRIPTION	QTY.
<b>14MMBT-6MJ</b>	M14 x 1.5 - 9/16" x 18NF (No. 6 JIC)	4
<b>16MMBT-6FI</b>	M16 x 1.5 - 5/8" x 18NF (Female Inverted)	4
<b>16MMBT-6MJ</b>	M16 x 1.5 - 9/16" x 18NF (No. 6 JIC)	4
<b>18MMBT-6MJ</b>	M18 x 1.5 - 9/16" x 18NF (No. 6 JIC)	4
<b>5MBT-5MJ</b>	1/2" x 20NF - 1/2" x 20NF (No. 5 JIC)	4
<b>7MBT-6MJ</b>	11/16" x 16NF 9/16" x 18NF (No. 6 JIC)	4

**Male - Female Thread Adapters**

Part No. **BQ7004**

CONTENTS	DESCRIPTION	QTY.
<b>BQ40</b>	(M) M10 x 1 (F) M10 x 1 (DPS)	4
<b>BQ41</b>	(M) M10 x 1 (F) M10 x 1.25 (IS)	4
<b>BQ42</b>	(M) M10 x 1.25 (F) M10 x 1 (IS)	4
<b>BQ43</b>	(M) M12 x 1 (F) M10 x 1 (IS)	4
<b>BQ44</b>	(M) M10 x 1 (F) M12 x 1 (IS)	4
<b>BQ45</b>	(M) 3/8" x 24NF (F) 7/16" x 24NS (IS)	4
<b>BQ46</b>	(M) 7/16" x 24NS (F) 3/8" x 24NF (IS)	4
<b>BQ47</b>	(M) 7/16" x 20NF (F) 3/8" x 24NF (IS)	4
<b>BQ48</b>	(M) 1/8" x 27NPT (F) 3/8" x 24NF (IS)	4
<b>BQ49</b>	(M) M10 x 1 (F) 3/8" x 24NF (IS)	4
<b>BQ50</b>	(M) 3/8" x 24NF (F) M10 x 1 (IS)	4
<b>BQ120</b>	(M) 1/2" x 20NF (F) 3/8" x 24NF (IS)	4
<b>BQ121</b>	(M) 9/16" x 20NS (F) 3/8" x 24NF (IS)	4
<b>BQ122</b>	(M) 1/2" x 20NF (F) 7/16" x 24NS (IS)	4
<b>BQ123</b>	(M) 9/16" x 18NF (F) 7/16" x 24NS (IS)	4
<b>BQ124</b>	(M) 9/16" x 18NF (F) 3/8" x 24NF (IS)	4
<b>BQ125</b>	(M) M10 x 1 (F) 3/8" x 24NF (DPS)	4
<b>BQ156</b>	(M) 3/8" x 24NF (F) 3/8" x 24NF (IS)	4

IS = Inverted Seat DPS = Drill Point Seat (M) Male (F) Female

**Metric Tube Nuts**

Part No. **BQ7005**

CONTENTS	DESCRIPTION	QTY.
<b>BQ72</b>	Male M10 x 1 - 3/16" Tube (DIN)	4
<b>BQ4511</b>	Male M10 x 1 - 3/16" Tube	10
<b>BQ4512</b>	Male M10 x 1.25 - 3/16" Tube	6
<b>BQ4513</b>	Male M12 x 1 - 1/4" Tube	6
<b>BQ9174</b>	Female M12 x 1 - 3/16" Tube	4
<b>BQ9175</b>	Female M10 x 1 - 3/16" Tube	4
<b>BQ9178</b>	Female M12 x 1.5 - 1/4" Tube	4
<b>BQ9179</b>	Female M12 x 1 - 1/4" Tube	4
<b>BQ9180</b>	Male M12 x 1 - 3/16" Tube	4
<b>BQ9182</b>	Male M12 x 1.5 - 1/4" Tube	4
<b>BQ9183</b>	Male M14 x 1.5 - 6mm Tube	4
<b>BQ9188</b>	Male M10 x 1.5 - 3/16" Tube	4
<b>BQ9191</b>	Male M11 x 1.5 - 3/16" Tube	4
<b>BQ9192</b>	Male M12 x 1.25 - 3/16" Tube	4
<b>BQ9193</b>	Male M12 x 1.5 - 3/16" Tube	4



PART NO.  
**BQ7006**



PART NO.  
**BQ7009**



PART NO.  
**BQ7012**



PART NO.  
**BQ7007**



PART NO.  
**BQ7010**



PART NO.  
**BQ7014**

### Imperial Tube Nuts

Part No. **BQ7006**

CONTENTS	DESCRIPTION	QTY.
<b>BQ57</b>	Female 7/16" x 20NF - 1/4" Tube	4
<b>BQ2577</b>	Male 7/16" x 24NS - 1/4" Tube	10
<b>BQ2578</b>	Male 1/2" x 20NF - 5/16" Tube	6
<b>BQ4276</b>	Male 3/8" x 20BSF - 3/16" Tube	4
<b>BQ4277</b>	Male 7/16" x 20NF - 1/4" Tube	4
<b>BQ4285</b>	Male 3/8" x 24NF - 3/16" Tube	4
<b>BQ5555</b>	Male 3/8" x 24NF - 3/16" Tube	10
<b>BQ5842</b>	Male 7/16" x 24NS - 3/16" Tube	10
<b>BQ6118</b>	Male 7/16" x 20NF - 3/16" Tube	6
<b>BQ9176</b>	Female 3/8" x 24NF - 3/16" Tube	4
<b>BQ9177</b>	Female 1/2" x 20NF - 5/16" Tube	4
<b>BQ9184</b>	Male 1/2" x 20NF - 3/16" Tube	4
<b>BQ9185</b>	Male 9/16" x 18NF - 3/16" Tube	4
<b>BQ9186</b>	Male 9/16" x 18NF - 1/4" Tube	4
<b>BQ9187</b>	Male 1/2" x 20NF - 1/4" Tube	4

### Banjo Bolts

Part No. **BQ7007**

CONTENTS	DESCRIPTION	QTY.
<b>BQ8086</b>	M10 x 1.5 L = 23mm	4
<b>BQ8087</b>	M11 x 1.25 L = 23mm	4
<b>BQ8088</b>	M10 x 1.5 L = 29mm	4
<b>BQ8089</b>	7/16" x 20NF L = 15/16"	4
<b>BQ8090</b>	7/16" x 24NS L = 1-1/16"	4
<b>BQ8092</b>	M12 x 1.5 L = 25mm	4
<b>BQ8093</b>	3/8" x 24NF L = 1"	6
<b>BQ8095</b>	M10 x 1 L = 22mm	6
<b>BQ8096</b>	7/16" x 20NF L = 1-1/16"	4
<b>BQ8097</b>	1/2" x 20NF L = 1-3/16" L	4
<b>BQ8098</b>	M12 x 1 L = 21mm	4
<b>BQ8099</b>	M10 x 1.25 L = 22mm	4

### Female Tube Joiners

Part No. **BQ7009**

CONTENTS	DESCRIPTION	QTY.
<b>BQ110</b>	3/8" x 24NF (IS)	4
<b>BQ111</b>	7/16" x 24NS (IS)	4
<b>BQ114</b>	M10 x 1 (DPS)	
<b>BQ115</b>	3/8" x 24NF (DPS)	4
<b>BQ116</b>	M12 x 1 (IS)	4
<b>BQ117</b>	M10 x 1 (IS)	4

IS = Inverted Seat DPS = Drill Point Seat

### Male Test Adaptors

Part No. **BQ7010**

CONTENTS	DESCRIPTION	QTY.
<b>BQ129</b>	M10 x 1.0 - 3/8" x 24NF (No. 3 JIC)	
<b>BQ130</b>	M10 x 1.5 - 3/8" x 24NF (No. 3 JIC)	4
<b>BQ131</b>	3/8" x 24NF - 7/16" x 20NF (No. 4 JIC)	4
<b>BQ134</b>	7/16" x 24NS - 7/16" x 20NF (No. 4 JIC)	4
<b>BQ135</b>	3/8" x 24NF - 3/8" x 24NF (No. 3 JIC)	4
<b>BQ144</b>	M12 x 1.0 - 7/16" x 20NF (No. 4 JIC)	

### Brake Hose Plugs

Part No. **BQ7012**

CONTENTS	DESCRIPTION	QTY.
<b>BQ18</b>	Male M10 x 1	2
<b>BQ19</b>	Male 3/8" x 24NF	2
<b>BQ26</b>	Male 7/16" x 24NS	2
<b>BQ160</b>	Female 3/8" x 24NF	2
<b>BQ161</b>	Female 7/16" x 24NS	2
<b>BQ162</b>	Female 7/16" x 20NF	2
<b>BQ163</b>	Female 1/2" x 20NF	2
<b>BQ164</b>	Female M10 x 1	2
<b>BQ165</b>	Female M10 x 1.25	2
<b>BQ166</b>	Female M12 x 1	2
<b>BQ167</b>	Female M12 x 1.5	2
<b>BQ1020</b>	Blocking off Tool (Fits banjo holes 3/8" to 5/8")	1

### Bleed Screws

Part No. **BQ7014**

CONTENTS	DESCRIPTION	QTY.
<b>BQ315</b>	Bleeder Cap - Small	10
<b>BQ316</b>	Bleeder Cap - Large	10
<b>BQ4433</b>	Bleed Screw 3/8" x 24NF	6
<b>BQ4434</b>	Bleed Screw M10 x 1 Long	4
<b>BQ4435</b>	Bleed Screw M10 x 1 Short	4
<b>BQ4438</b>	Bleed Screw 5/16" x 24NF	4
<b>BQ4439</b>	Bleed Screw 1/4" x 28NF	4
<b>BQ4440</b>	Bleed Screw M10 x 1.5	4
<b>BQ4441</b>	Bleed Screw M7 x 1	4
<b>BQ4442</b>	Bleed Screw M8 x 1.25	4
<b>BQ4443</b>	Bleed Screw M8 x 1	4
<b>BQ4444</b>	Bleed Screw 7/16" x 24NS	4
<b>BQ4445</b>	Bleed Screw 7/16" x 20NF	4
<b>BQ4446</b>	Bleed Screw M10 x 1.25	4

## Metal Tubing



### EziBend Tube

PART NO.	OD SIZE	WALL THICKNESS	LENGTH
<b>T187-25CN</b>	3/16"	.028"	25'
<b>T250-25CN</b>	1/4"	.028"	25'
<b>T312-25CN</b>	5/16"	.028"	25'
<b>T375-25CN</b>	3/8"	.028"	25'
<b>T375-25CN-35</b>	3/8"	.035"	25' <b>NEW</b>



### Convert steel tubes to non rusting EziBend tube:

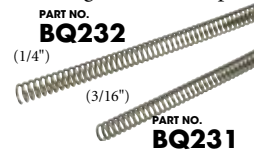
- Exceeds International Standards.
- Doesn't rust or corrode.
- Easy to flare and bend.
- Able to bend tube by hand on the vehicle
- OEM on luxury European vehicles.
- Polishes to a brilliant finish.
- Long term safety benefits
- Made in the USA
- Available in sizes 3/16", 1/4", 5/16", 3/8".

### Polished Stainless Steel Tube

PART NO.	OD SIZE	WALL THICKNESS	LENGTH
<b>T187-20SS</b>	3/16"	.028"	20'
<b>T250-20SS</b>	1/4"	.028"	20'
<b>T312-20SS</b>	5/16"	.028"	20'
<b>T375-20SS</b>	3/8"	.028"	20'

### Brake Tube Protector

No rust Stainless Steel Spring protects your brake tube from gravel & debris – Easy to install – Just cut to length - Available in sizes 3/16" & 1/4" ID in 3 feet lengths – Can be polished to shine.

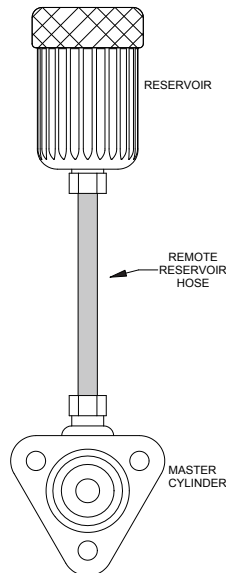


### Remote Reservoir Hose

This brake fluid compatible hose connects any remote brake fluid reservoir to the master cylinder. These are black in color and purchased in 10' increments.



PART NO.	ID SIZE	OD
<b>BQ320</b>	1/4"	7/16"
<b>BQ321</b>	5/16"	1/2"
<b>BQ322</b>	3/8"	9/16"



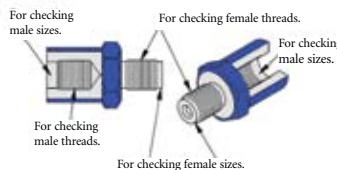
### "The" Automotive Thread Gauge

Instantly identifies at least 99% of brake plumbing threads.

- Includes the 16 most popular Male and Female threads used on braking systems
- Includes both Male & Female size gauging
- Includes both Metric and Imperial
- Gauge can be used to plug fluid ports
- Color coded in groups for fast selection
- All threads are hardened for long life
- Comes in a sturdy black carrying case



Each gauge is available separately.



PART NO.	DESCRIPTION
<b>BQ2100</b>	Kit
<b>BQ2100A</b>	3/8 x 24NF
<b>BQ2100B</b>	7/16 x 24NS
<b>BQ2100C</b>	7/16 x 20NF
<b>BQ2100D</b>	1/2 x 20NF
<b>BQ2100E</b>	M10 x 1.0
<b>BQ2100F</b>	M10 x 1.25
<b>BQ2100G</b>	M12 x 1.0
<b>BQ2100H</b>	M12 x 1.5
<b>BQ2100J</b>	9/16 x 18NF
<b>BQ2100K</b>	9/16 x 20NS
<b>BQ2100L</b>	M9 x 1.0
<b>BQ2100M</b>	M10 x 1.5
<b>BQ2100N</b>	M12 x 1.25
<b>BQ2100P</b>	M11 x 1.25
<b>BQ2100Q</b>	M14 x 1.5
<b>BQ2100R</b>	3/8 x 20BSF

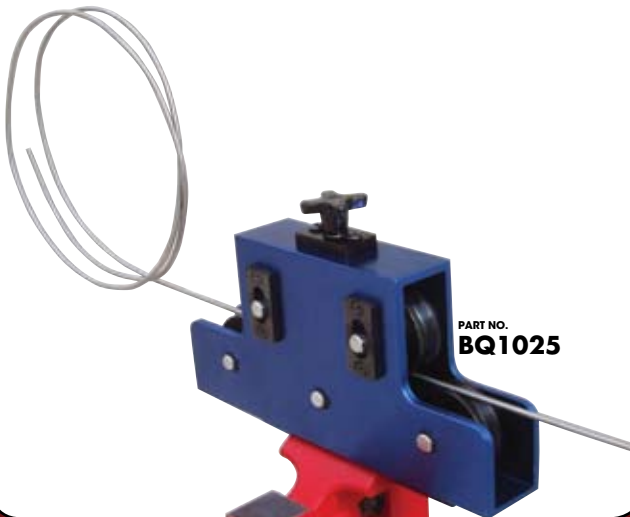
**Blue** - Most popular Metric threads  
**Red** - Most popular Imperial threads  
**Gold** - Less popular Metric threads  
**Green** - Less popular Imperial threads

## Straightens Coiled Tube...Fast

At Last...A Tool To Straighten Tube That's Economical

Easily straightens light wall tubing from 3/16" to 1/2." Simply feed your coiled tube into the straightener and it comes out straight on the other side.

- Fully adjustable
- Smooth operation (roller bearing guides)
- Vice or bracket mounted
- Can be used on all types of annealed tubing (even stainless)



## Remove Frozen Bleeder Screws like a Pro ... Easily

No more... heating up, hammering, drilling and tapping.

- Can save you a lot of time.
- Pays for itself very quickly.
- Works on both cast iron and aluminum.



### Bleeder Buster Kit

PART NO. BQ2200

It is as simple as 1, 2, 3. Works every time.

1. Place filler wire into end of bleeder and cut to length.
2. Install tool into your air chisel and shock bleeder from the top.
3. Unscrew bleed screw with conventional tool.

**How does it work?** Installing the wire plug into the bleed screw prevents the walls of the bleed screw from collapsing when removing. Applying impact to the bleed screw for about three to four seconds will compress and work harden the bleeder screw and "shock" the threads free.

Note: The "compressed" bleed screw will need to be replaced after removal.

## The Handiest Tool in a Brake Mechanic's Toolbox

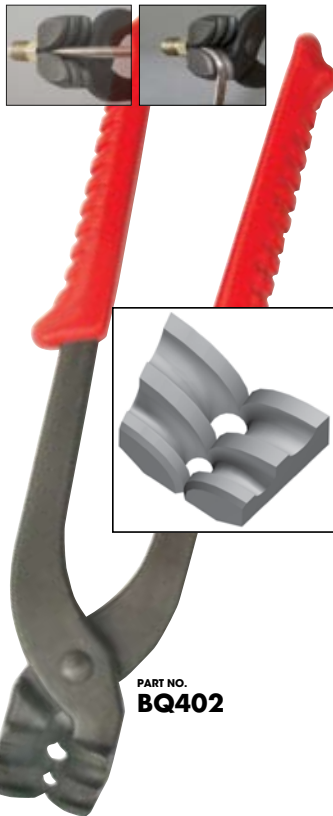
### Brake Tube Pliers

For use on 3/16" and 1/4" brake tube.

#### Convenient and Quality Crafted

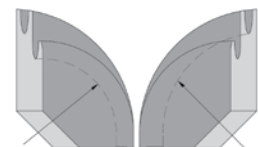
Brake mechanics often testify that this tool is the handiest tool in their tool boxes. Brake Tube Pliers are lightweight, yet strong enough for any brake job.

Brake Tube Pliers are designed to work efficiently, securely, and accurately in tight spaces, without damaging the brake tube. So, when the job calls for working with 3/16" or 1/4" brake tube, *Brake Tube Pliers will make life as easy as 1, 2, 3.*

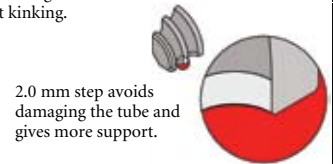


PART NO. BQ402

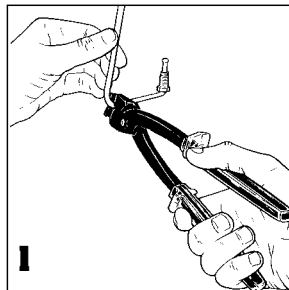
#### Distinguishing Features



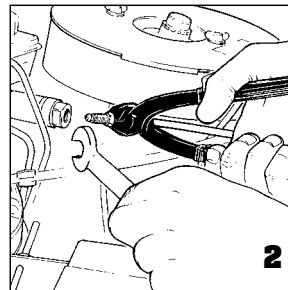
**10mm Radius for 3/16" tube**  
**16mm Radius for 1/4" tube**  
1/4" tube bending feature has appropriate bend radius for a tight bend without kinking.



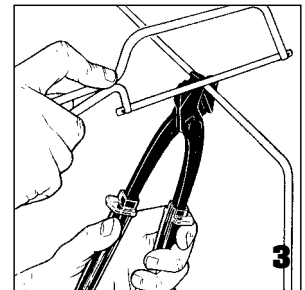
2.0 mm step avoids damaging the tube and gives more support.



1 Brake Tube Pliers allows a tight 90° bend on the brake tube, right at the tube nut.



2 Brake Tube Pliers allow you to align the tube nut during assembly. In addition, it grips 3/16" or 1/4" brake tube securely without damaging it.



3 The hardened, square face on the back of Brake Tube Pliers acts as a guide to cut 3/16" or 1/4" brake tube squarely.

# The Fastest Flaring Tool in The West

Just Got Faster, Better and Less expensive!



Produce professional tube flares in a matter of seconds. This highly efficient tool allows you quick profits and improved customer service.

Just dial and activate your required operation and your done! The BrakeQuip Flaring Tool has become the industry standard. It produces single and double flares to SAE and DIN standards on any light walled tubing 3/16" to 1/2".

**FEATURES:**

- Punch turret has OP-1\* and OP-2\*\* punches positioned side by side for efficiency
- Cam lever operation provides speed and efficiency
- Features automatic punch extraction
- Smooth die channel does not mark tube
- Comes in a rugged plastic case

\*OP-1 = First Operation,

\*\*OP-2 = Second Operation

**NEW**

## HIGH Speed Flaring Tool

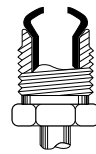
**BQ350 and BQ351**

(Supersedes BQ27008)

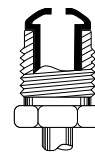
**BQ350** - Creates 37° and 45° single and double flares as well as DIN. Includes 14-Die sets and 16-Punches.

**BQ351** - Is a basic version which creates 45° single and double flares including DIN. Includes 5-die sets and 7-punches. Sizes 3/16", 1/4", 5/16" and 3/8" and 4.75mm.

Creates these flares instantly:



SAE (Single), "Bubble"



DIN (Single), "Mushroom"



SAE/DIN (Double)

## Automotive Hose Manufacturing Systems

Make your own legal brake hoses

Systems available to suit all budgets from using your shop press to high volume semi-automatics. Available in selected areas.

Makes Both OEM Rubber and Stainless Steel Braided Hoses



**BQ4000 Series**



**BQ1005-2 Professional Series**



**BQ1013 High Pressure Hose Tester**

**BrakeQuip**  
INNOVATIVE SOLUTIONS FOR AUTOMOTIVE PLUMBING

1470 Amherst Road, Knoxville, TN 37909 (USA)

E-MAIL [info@brakequip.com](mailto:info@brakequip.com) PHONE 865-251-9193

WEB [www.brakequip.com](http://www.brakequip.com) FAX 865-251-9192

**DISTRIBUTED BY:**

Printed in USA

Find your local BrakeQuip Dealer at [www.brakequip.com](http://www.brakequip.com)